



XCELL AMNIO MATRIX™

XCELL AMNIO MATRIX™

Lyophilized Amniotic
Membrane

Advanced Wound Care Made Simple

You'll see the difference.

One look and it is obvious that XCell Amnio Matrix is different. XCell Amnio Matrix is opaque and thicker than other grafts. The dry graft is flexible and easy to handle. What you can't see is the benefit of our proprietary processing focused on preserving the quality of the matrix. The growth factor-rich matrix with an outer basement membrane immediately serves as a natural barrier and supports re-epithelialization.

Ideal wound covering options for your challenging cases.

- *Natural barrier protects from the environment*
- *Simple to apply-flexible graft with no rehydration needed*
- *Physiologic reservoir of growth factors and cytokines*

- 1 Better Preserved Matrix
- 2 Optimal Growth Factor Preservation
- 3 Convenient Room Temperature Storage



PRECISE™
BIOSCIENCE

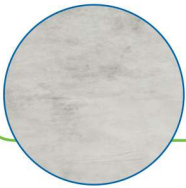
XCELL AMNIO MATRIX™

Lyophilized Amniotic
Membrane

Next generation allograft that offers
easy-to-use wound care solutions



- Natural physiological barrier for various applications

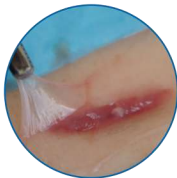


- Optimal preservation of endogenous growth factors



Chronic non-healing

Supports wound closure of chronic diabetic foot ulcers, venous leg ulcers and pressure wounds



Surgical

Enables rapid, non-pathologic healing and remodeling of surgical and reconstructive wounds



XCell Amnio Matrix Ordering Information

Size	Product ID
2 x 2 cm	XAM-0202
2 x 4 cm	XAM-0204
4 x 4 cm	XAM-0404
4 x 7 cm	XAM-0407



Precise Bioscience
7630 Plaza Court
Willowbrook, IL 60527

1. Data on file.

Results from laboratory testing or animal studies may not be predictive of clinical experience. Physicians and operating room personnel should review the Package Insert for product information, including indications, contraindications, precautions and warnings.

XCELL AMNIO MATRIX is registered trademarks of Precise Bioscience.

© 2020 Precise Bioscience. All rights reserved. | PRECISEBIOSCIENCE.COM

XAM-0001 20